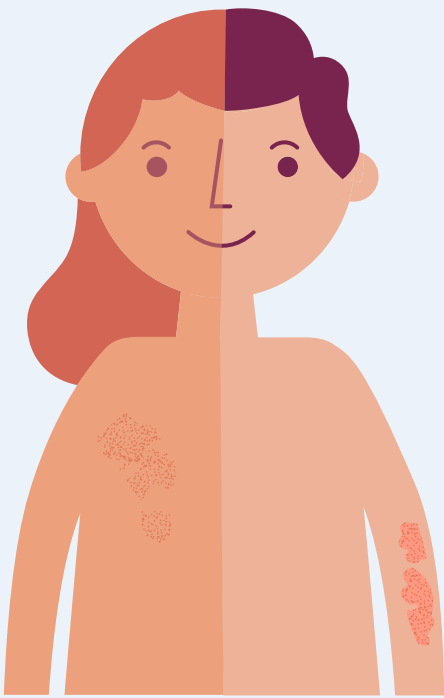


# IMPROVING OUTCOMES IN PSORIATIC ARTHRITIS (PSA) – THE HIPPOCRATES APPROACH



## THE CHALLENGE

Psoriatic Arthritis: A Complex, Hard-to-Diagnose Disease



# 30%

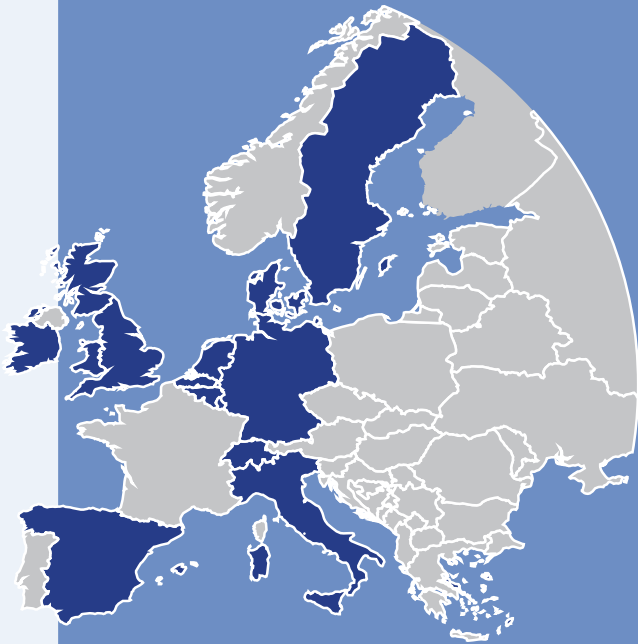
Of people who have the skin condition Psoriasis develop PsA



This is difficult to predict and can lead to

- late diagnosis
- joint damage
- uncontrolled inflammation

## THE HIPPOCRATES APPROACH: Europe-Wide Science Collaboration Tackling PsA



## PATIENT RESEARCH PARTNERS

People with PsA at the Heart of Research

- ✓ Study Design
- ✓ Feedback
- ✓ Leadership



ENSURING RESEARCH IS PATIENT-FRIENDLY



predicting PsA



diagnosing earlier



identifying damage risk



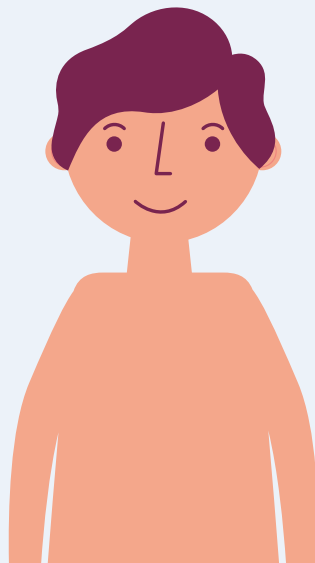
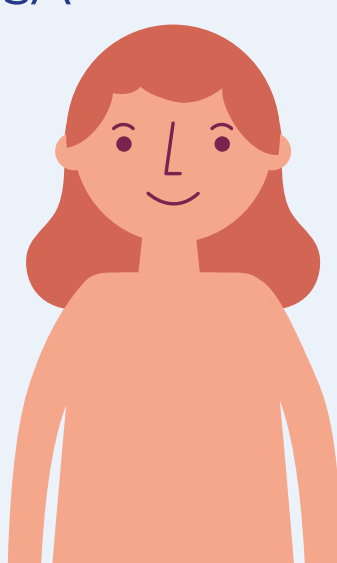
personalised treatment

## IMPACT AND GOALS

Towards Better Outcomes for people with PsA



Improved outcomes



Related publication:

FitzGerald O, Behrens F, Barton A, et al. **Application of clinical and molecular profiling data to improve patient outcomes in psoriatic arthritis. Therapeutic Advances in Musculoskeletal Disease.** 2023;15.

<https://doi.org/10.1177/1759720X231192315>



innovative  
medicines  
initiative



This project has received funding from the Innovative Medicines Initiative 2 Joint Undertaking (JU) under grant agreement No. 101007757. The JU receives support from the European Union's Horizon 2020 research and innovation programme and EFPIA.